



**2 Bed
House
located in**

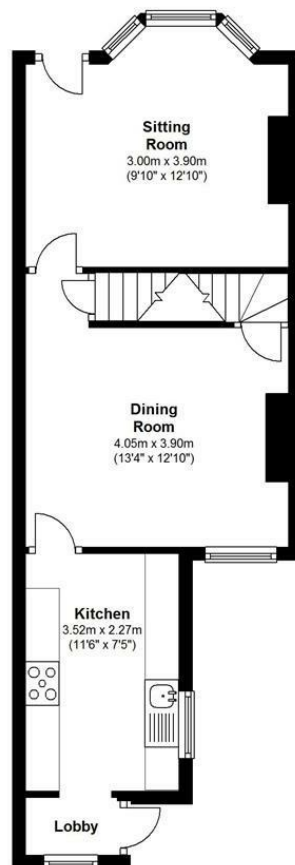
Offers Over £335,000



briggs & mortimer
HYBRID



Basement
Approx. 14.2 sq. metres (152.5 sq. feet)



Ground Floor
Approx. 38.3 sq. metres (412.3 sq. feet)



First Floor
Approx. 35.1 sq. metres (377.5 sq. feet)

Total area: approx. 87.6 sq. metres (942.4 sq. feet)

Energy Efficiency Rating		
	Current	Potential
Very energy efficient - lower running costs		
(92 plus) A		86
(81-91) B		
(69-80) C		62
(55-68) D		
(39-54) E		
(21-38) F		
(1-20) G		
Not energy efficient - higher running costs		
England & Wales <small>EU Directive 2002/91/EC</small>		

DIRECTIONS

CONTACT

20 Market Hill
Royston
SG89JG

E: sales@briggsandmortimer.co.uk
T: 01763242626
<https://www.briggsandmortimer.co.uk/>

briggs & mortimer
HYBRID